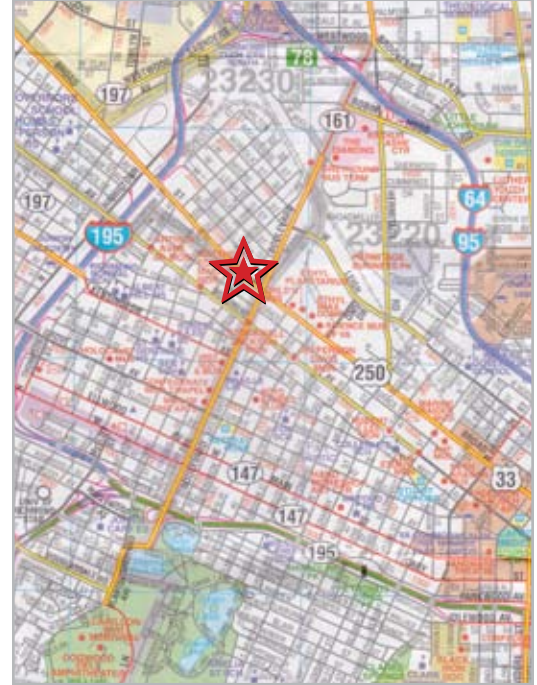


## Office Space For Lease: 2900 West Broad Street

Location: Sheppard and West Broad Street, Richmond, VA  
1 Block West of Boulevard

Size: 3,000 SF with Off-Street Parking Available



**Nathan A. Shor**  
[nathan@shorrealstate.com](mailto:nathan@shorrealstate.com)

**David T. Kalman**  
[david@shorrealstate.com](mailto:david@shorrealstate.com)

**804.358.7404**

## 2900 West Broad Street

Sheppard and West Broad Street, Richmond, VA  
1 Block West of Boulevard

Rent is \$10.50 psf Triple Net + \$3.00 psf Expenses (est.)  
Visit [www.shorrealstate.com](http://www.shorrealstate.com) to view all available properties.

### Building Highlights

- Approx. 3,000 Square Feet
- 9 Offices + Reception
- 650+ SF Conference room with wet bar
- Kitchenette / break room

### Location Highlights

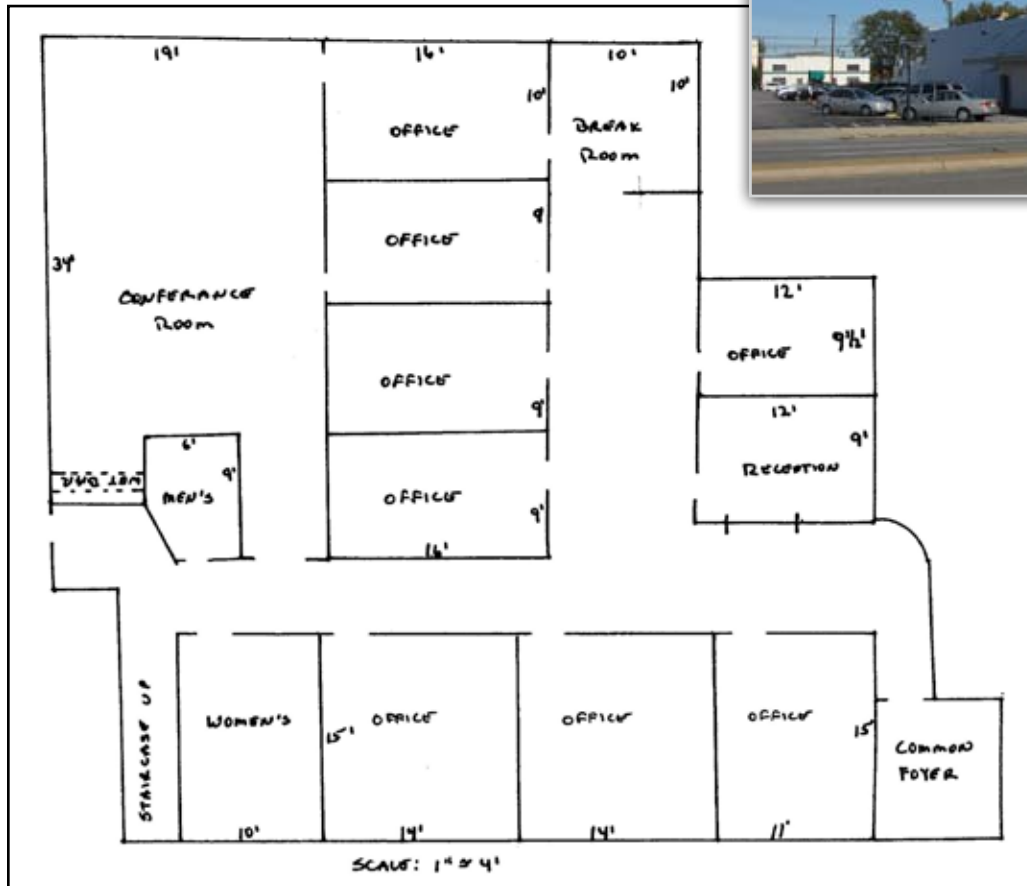
- Signage Available on Broad Street
- Easy Access to Interstates:  
.6 Miles to 195  
1.25 Miles to 95
- On GRTC Bus lines

### Building Features

- 2 New HVAC Units
- 2 ADA Bathrooms
- 10 Parking Spaces adjacent to Entrance
- Additional Parking in Rear

## 2900 West Broad Street

Sheppard and West Broad Street, Richmond, VA  
1 Block West of Boulevard



Nathan A. Shor  
[nathan@shorrealstate.com](mailto:nathan@shorrealstate.com)

David T. Kalman  
[david@shorrealstate.com](mailto:david@shorrealstate.com)

**804.358.7404**

